

Specifications of the Scanner unit for SP200W

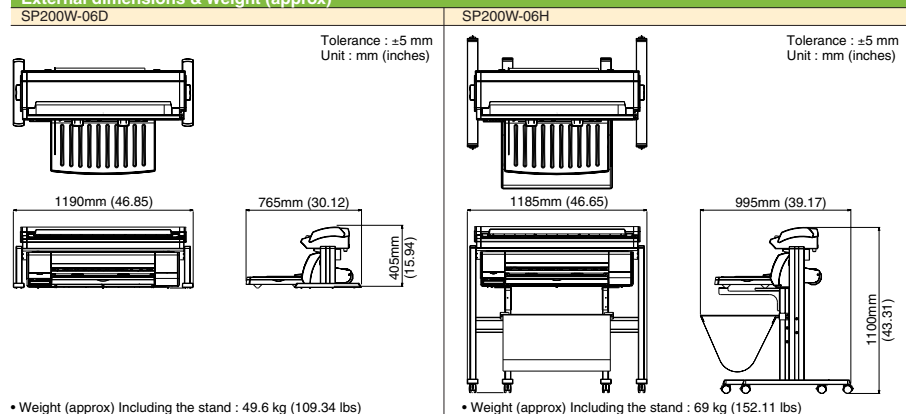
Document width	Maximum width: 965 mm(38 inches); minimum width: 257 mm(10.12 inches)
Document length *1	Maximum length: 16 m(629.9 inches); minimum length: 210 mm(8.27 inches)
Effective scanning width	Maximum width: 932.2 mm(36.70 inches)(centered); Minimum width: 50mm(1.97 inches)
Effective scanning length	Maximum length: 16 m(629.9 inches); minimum length: 30 mm(1.18 inches)
Document size *1	JIS A0, A1, A2, A3, A4 DIN A0, A1, A2, A3, A4 ANSI Engineering E, D, C, B, A ANSI Arch E, D, C, 30/36inch
Document thickness	Up to 0.8 mm(0.031inches) [including the carrier sheet]
Scanning margins	Leading edge, trailing edge: 4mm(0.157inches); 0.5mm(0.020 inches) for each margin
Scanning system	Main scanning system Contact image sensor system (five A4 sensors in a zigzag pattern) Sub scanning system Document travel (sheet through) system
Scanning surface	Upper surface
Optical resolution	600dpi
Interpolated resolution	100/200/300/400/600/800/1200dpi
Scanning mode	High-speed scan / Normal scan / High quality scan
Scanning precision *2	±0.1% or ±1 pixel, whichever is larger
Gradation	Monochrome Bilevel, intermediate tones (dithering, error diffusion) Gray 256 shades Color 24-bit
Threshold value	A DSP (digital signal processor) enables automatic setting of the threshold value (monochrome scans only)
Color space	sRGB
Interface	USB2.0 (High-speed)
Output	Image data
Rated power supply	100 to 120/200 to 230 VAC ±10%, 50/60 Hz
Operating environment	Temperature: 10 to 30degC, Humidity: 20% to 80% R.H. (non-condensing)
Power consumption	60 W or less (12 W or less in power-saving mode *3)
Safety/EMC certificate	UL, FCC class B (USA), CE mark (EU)

Specifications of the Software for SP200W

Software name	OPS123 (Scanning ARTS SP)
Copy	Copy settings Number of copies (1 to 999) Continuous copying (continuous printing and scanning)
Scan	Output data format TIFF(G4), PLC, PCX, CG4, TIFF, BMP, JPEG, Grayscale etc. Parameter settings Simple document type selection *4, Document size Automatic despeckling function (pixel level) Automatic skew correction (±7 degree or less) Continuous scanning, Automatic file naming, High-speed scanning Color adjustment User-defined document creation Scanning resolution setting Hue, chroma, and luminosity adjustment (for 24-bit color) Gamma, brightness, and contrast adjustment (for grayscale) Black/white level setting Display Scanner status display Scan preview Miscellaneous sRGB support
Print	Input data format TIFF(G3/G4), BMP, JPEG, PLC, PCX, CG4 etc. Settings Print size selection (enlarge/reduce function) Zooming (25% to 400% in 1% increments) Number of prints (1 to 999), Reprints (1 to 999), Margin settings Print position specification (center/left margin, top margin) Continuous printing, Rotate (90-degree steps) Negative output, left/right reflection
Copying speed	Print mode High speed Standard High quality - Paper size : A1 size Monochrome 1min 33sec 4min 33sec 5min 17sec - Media : Standard paper Color 4min 21sec 9min 02sec 15min 27sec

Leave sufficient space for operation in front of and behind the unit. Depending on the condition of the usage, it may happen that the scanning speed become slow down. For example, to open the several data on the screen or to use the several applications at the same time may cause the slow down of the scanning speed.*

External dimensions & Weight (approx)



Specifications of the Printer unit for SP200W

Printing system	Thermal inkjet
Print heads	Black, Color(C/M/Y nozzles combined)
Ink	4 colors (Bk, C, M, Y)
Printing resolution	Color 4800 x 1200 dpi max. Monochrome 2400 x 1200 dpi max.
Allowable paper sizes	ISO A1, A2, A3, A4, B2, B3, B4 DIN A1, A2, A3, A4 ANSI 22 x 34, 17 x 22, 11 x 17, 8.5 x 11 (inch) ANSI Arch 24 x 36, 18 x 24, 12 x 18, 9 x 12 (inch) JIS B2, B3, B4
Allowable paper thickness	0.065mm to 0.190 mm 0.0026inches to 0.0075 inches
Margins (*Narrow setting) *5	Cut sheets Leading edge, trailing edge, left/right edges: 5 mm for each margin Roll paper Leading edge, trailing edge, left/right edges: 5 mm for each margin
Margins (accuracy guaranteed)	Cut sheets Leading edge 5 mm, trailing edge 13 mm, left/right 5 mm Roll paper Leading edge, trailing edge, left/right edges: 5 mm for each margin
Maximum printing length	Cut sheets 1.4m (55.12inches) Roll paper 18m (708.66inches)
Paper supply switching	Manual switching between roll paper and cut sheets
Distance accuracy	±0.1% or ±0.1 mm, whichever is larger ±0.1% or ±0.039inch, whichever is larger (after user distance compensation has been performed)
Buffer capacity	32MByte
Interfaces	USB 2.0 Full-speed
Rated power supply	100 to 240 VAC, 50/60 Hz
Operating environment	Temperature: 15 to 30°C, Humidity : 20 to 80% RH (non-condensing) barometric: 840hPa or higher
Power consumption	During operation: 50 W or less; Standby status: 10 W or less
Safety/EMC certificate	UL, FCC class B (USA), CE mark (EU)

Hardware requirements for SP200W

CPU	Pentium III 1GHz (Pentium 4 2GHz)
Memory	256MB or more (1GB or more)
Free space on the HDD	10GB or more (30GB or more)
OS	Windows2000, Windows XP
Interface	USB2.0 (High speed) x 2 ports

Suggested hardware requirements is in "()". Depending on the condition of the usage, it may happen that the scanning speed become slow down. For example, to open the several data on the screen or to use the several applications at the same time may cause the slow down of the scanning speed.*

Option for scanner unit

ISO922	36"-size Carrier sheet
ISO908	25"-size Carrier sheet
IH-90001BK	Print head (Black)
IH-90001CMY	Print head (C/M/Y)
IJ-90001BK	Ink cartridge (Black)
IJ-90001C	Ink cartridge (Cyan)
IJ-90001M	Ink cartridge (Yellow)
IJ-90001Y	Ink cartridge (Magenta)
CT03U	Cross cutter

*1 If the document is a long-length document, the actual length that can be scanned is limited by the available memory (hard disk or other data storage device) of the computer to which the scanner is connected, and also by the grade of the medium being scanned.
*2 Notes on scanning precision
The scanning precision may vary slightly depending on the grade and thickness of the medium being scanned, and on the operating conditions.
*3 The precision figures above were measured under the Graphtec specified operating conditions.
*4 Only when the power supply is 100 to 120 VAC.
*5 Monochrome: Maps/drawings (grayscale/monochrome), faint blueprints (monochrome), dark blueprints (monochrome), posters (grayscale), photographs (grayscale)
Color: Photographs (full color), posters (full color), maps/drawings (full color/marker pen emphasis)
*6 SP200W cannot be printed without margins.
*7 Including the high stand.

Accessories for scanner unit for SP200W-06D

Item	Qty
1 Desktop stand	1
2 Power cable	1
3 CD-ROM	1
4 USB Interface cable (3m)	1
5 Setup manual	1
6 Document returner (Rear guide)	1
7 Document support guide	1
8 Cleaning paper	1
9 Color adjustment kit	1

For SP200W-06H, the Hi stand is attached in stead of the desktop stand

Accessories for printer unit for SP200W-06D

Item	Qty
1 Power cable	1
2 Print head (Bk, C/M/Y)	1
3 Ink cartridge (Bk, C, M, Y)	1
4 CD-ROM	1
5 USB Interface cable (3m)	1
6 Quick Start Guide	1
7 Document support guide	1
8 Document guide table	1
9 Roll stocker	1
10 Cross cutter	1
11 Screw driver	1
12 A2 size paper feed cassette(separate package)	1

For SP200W-06H, the stand is attached

GRAPHTEC

Large Format Multi-Function System

SCAN PRINT WIDE



SP200Wseries

Transform your large document work flow with this combination Scanner and Printer System.



- Desktop Model
- Compact Lightweight Design
- Scan / Print / Copy
- Large format Multifunction Copying
- Inkjet Printing
- Ease of Maintenance

<http://www.vancolor.com.tw>

Brand names and product names listed in this brochure are the trademarks or registered trademarks of their respective owners. Specifications are subject to change without notice.

汎彩有限公司

VanColor Tech CO., LTD.

320 桃園縣中壢市三樂二街20號

Tel:(03)493-6095 Fax:(03)493-6609

E-mail:vancolor@seed.net.tw

服務項目

系統規劃 整合 買賣 維修服務

數位影像/電腦週邊/系統整合/維修服務

EPSON大圖展示中心/Mimaki、Roland大型噴畫機/割字機

Simple software, greater ease of use. Announcing a new arrival on the market—the SP200W A1-size digital multifunction peripheral device

The SP200W is a compact, desktop-type, large-format digital multifunction peripheral offered at an appealingly low price.

The device combines scanning, printing, and copying functions in one system.

With features such as the digitizing of drawings to speed up work processes and a reduction in the costs associated with outsourced copying, the debut of this new digital multifunction peripheral will change the way you work.

Digitization **SCAN** Face-up scanning

The surface to be scanned is loaded face-up for error-free scanning.

Revision of hand-drawn original drawings, process control charts and drawings; conversion of apparel patterns, posters, and other graphic material to electronic data

Color & monochrome **PRINT** 3-way paper feed

Select roll paper, front manual feed, or the A2-size paper feed cassette* to suit your needs.

Output of CAD drawings; output of process control charts, sales results charts, banners, scanned data and other graphic material

Ease of use **COPY**

93 seconds for an A1-size document
(when outputting a monochrome document using the high-speed/plain paper modes)

Stress-free copying of even large-format sizes

Copying of monochrome and color drawings, blueprints, posters and other graphic material

Large Format Multi-Function System **SCAN PRINT WIDE**



NEW SP200W-06D

NEW SP200W-06H

Lightweight, compact desktop model

Save space with a compact arrangement of scanner and inkjet printer devices, even though the scanner is A0-size. This is a large-format digital multifunction peripheral device that can be used on a desktop. A high-stand model, the SP200W-06H, is also available. Select the model that best suits your needs.

Three modes for a variety of tasks

Three modes - SCAN, PRINT, and COPY - are provided. Select SCAN to convert drawings to electronic data, PRINT to output CAD drawings and to print posters and charts, and COPY to make color and monochrome copies. The SP200W will help you meet a variety of needs in your work, and expand the range of what you can accomplish.

Easy operation with Scanning ARTS SP

The dedicated Scanning ARTS SP software provided with the SP200W lets you scan, print, and copy just as you would with an office copier. A wide variety of data-save mats - including PDF, JPEG, and BMP - are supported to allow you to use your data in different applications. For example, you can easily generate a black-and-white copy of a blueprint simply by selecting the COPY mode.

An A0-size face-up scanner

Scanning can now be performed with the surface to be scanned loaded face-up. This feature enables you to check the document while it is being scanned, and helps to reduce the number of small mistakes - such as loading the document in the wrong direction, document skewing, or loading the wrong document.

Simple application and driver software

SCANNING ARTS SP (dedicated software)

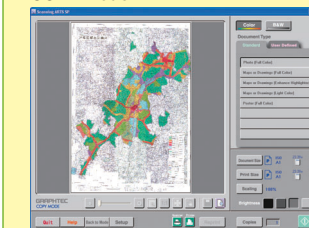
Main menu



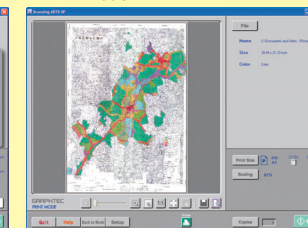
Select SCAN, PRINT, or COPY from the main menu.

After a mode has been selected directly, the parameters to be set for that mode are displayed in order, from top to bottom. Even a first-time user will be quickly up and running with this software.

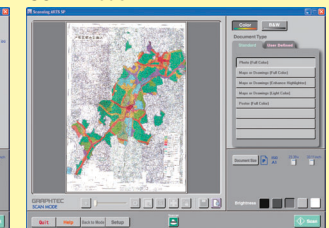
COPY mode



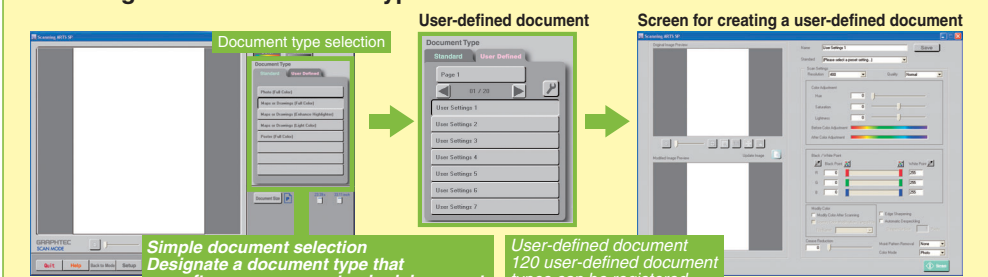
PRINT mode



SCAN mode



Scanning ARTS SP Document types

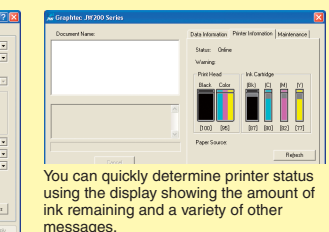
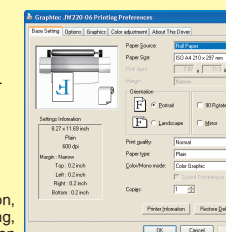


Document Type	Document Type
Photo (Full Color)	Maps or Drawings (Grayscale)
Maps or Drawings (Full Color)	Maps or Drawings (Black and White)
Maps or Drawings (Enhance Highlighter)	Light Blueprints (Black and White)
Maps or Drawings (Light Color)	Dark Blueprints (Black and White)
Poster (Full Color)	Posters (Gray Scale)
	Photo (Gray Scale)
	News Paper

Color document types	B&W document types
Photo (Full Color)	Maps or Drawings (Grayscale)
Maps or Drawings (Full Color)	Maps or Drawings (Black and White)
Maps or Drawings (Enhance Highlighter)	Light Blueprints (Black and White)
Maps or Drawings (Light Color)	Dark Blueprints (Black and White)
Poster (Full Color)	Posters (Gray Scale)
	Photo (Gray Scale)
	News Paper

Printer driver software

This software enables output from Windows software (such as CAD, spreadsheet, or word-processing programs), and also enables the SP200W to be used as a printer.



Even your selection of the printing orientation, which is easy to get wrong, can be checked on the Preview screen.

You can quickly determine printer status using the display showing the amount of ink remaining and a variety of other messages.