

# PHOTO PRINT5

*The Professional Digital Printing  
and RIP Software Solution*



*From Design to Production...Software at Work.*

# The High Quality Digital Printing RIP Software Solution

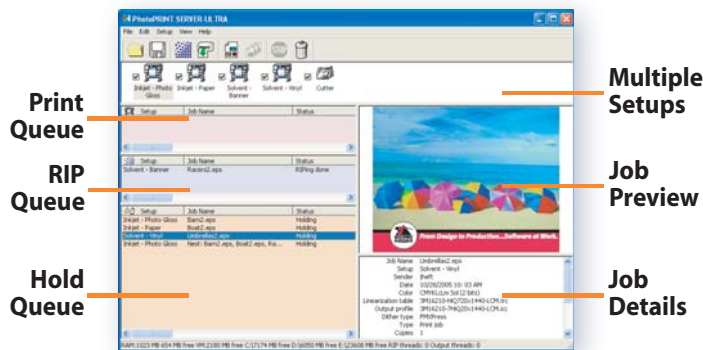
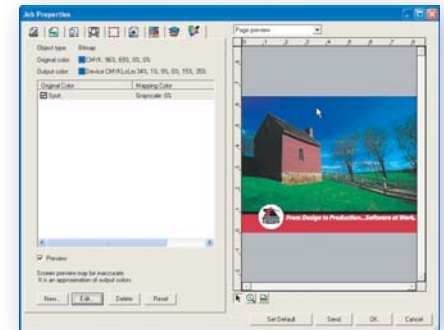
As the large format industry continues to expand and transform, *PhotoPRINT™ 5* once again grows to enhance your workflow and increase your productivity. Take advantage of the numerous technological breakthroughs and advancements easily with the continued ease-of-use and logical user interface of *PhotoPRINT 5*.

PHOTO  
**PRINT5**  
with Color **EXTREME**

## New Color **EXTREME**

It's not the right color if you're not happy. *PhotoPRINT 5* lets you take your colors to the extreme!

- **Object Color Control** feature - Interactive preview of the job's color information such as Object type, Spot Colors and more.
- **"Certified" Output Profiles**, powered by GretagMacbeth - carefully created and included in every level of *PhotoPRINT*.
- **Vividness Control** - lets you be in charge of this subjective aspect of color.
- **Color Profiler Wizard** - the most straightforward profiling system in the industry. Whether you are editing existing profiles, or creating custom profiles, *PhotoPRINT* eliminates the common pitfalls of profiling.

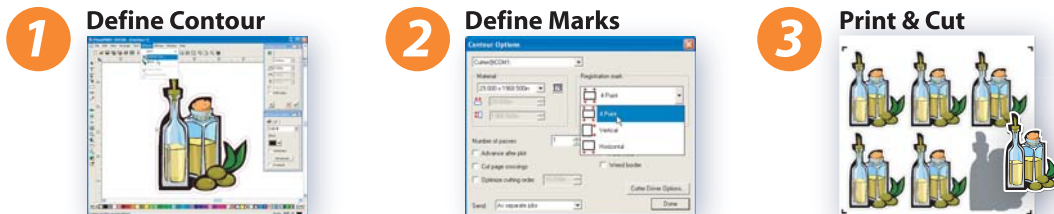


## Intuitive yet Powerful

*PhotoPRINT 5* boasts of an advanced task-based user interface, designed to reduce learning time and simplify workflows. In spite of *PhotoPRINT's* ease-of-use, each package is robust and built to handle the most demanding high print production environments with remarkable speed, ensuring professional output every time.

## Print & Cut Made Quick and Accurate

Print your image and contour cut the decal on any printer/cutter combination, with a 4-point alignment system accounting for possible media skew or distortion, to produce accurate cuts of any length. *PhotoPRINT* also supports the automatic sensing capability of the latest cutter models for simple, precise output.



## Workflow Controls

Powerful production controls enhance the efficiency of your workflow with automated features including: Interactive Tiling for control for panel placement and overlap; unique Tile Map function for a schematic of the completed graphic; multiple Nesting functions to save time and media; Auto-Rotate feature to evaluate and rotate the images to avoid tiling and conserve media.

### True Adobe® RIP Engine

*PhotoPRINT 5* is the only solution on the market that seamlessly integrates the latest genuine Adobe RIP Engine, guaranteeing accuracy, reliability and compatibility.

### PC or Mac

Identical interface and features are available for both the PC or Mac platforms; Supporting the latest operating systems: Mac Tiger 10.2 & 64-bit Windows XP.

### Pantone® Library

Accurately reproduce Pantone colors in process inks using *PhotoPRINT's* Color Mapping features and included library of Pantone colors.

# Flexibility: Yesterday, Today and Tomorrow

PhotoPRINT 5 lets you output to your new and old devices alike from a single workflow. PhotoPRINT also handles specialized output such as White Ink support and Borderless printing. Looking beyond today, PhotoPRINT's support for new devices will continue to be developed for the industry's new printers, cutters and color measurement devices...into the future.

## PhotoPRINT™ 5 Family of RIP software offers a full line of software RIP solutions, designed to maximize a variety of Digital Printing workflows...Today & Tomorrow:

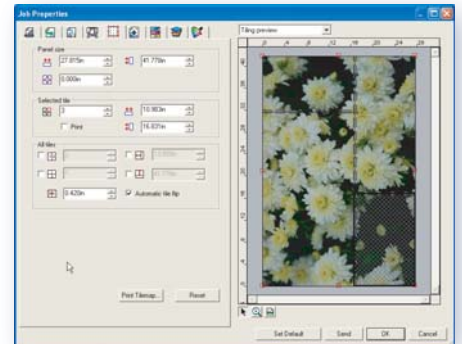
**PhotoPRINT SERVER-ULTRA™** – This top-of-the-line complete client-server RIP solution gives you ultimate control with every feature available in the PhotoPRINT line. Additional features include an EDITOR application for enhanced layout and design features including Templates and Variable Data, along with the Color Profiler Wizard, powered by GretagMachbeth, for unsurpassed output profile editing and creation.

**PhotoPRINT SERVER-PRO™** – The complete client-server RIP solution package includes extended capabilities and cost-saving features. Additional features include an EDITOR station for layout and design and Color Profiler Wizard for output profile creation and editing.

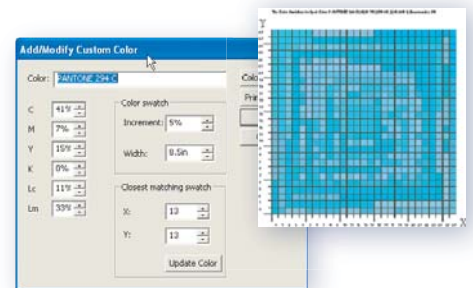
**PhotoPRINT SERVER™** – The client-server RIP solution for networks and large production environments, featuring productivity tools such as Job Priority, Page Nesting and Job Nesting. These tools will make workflow to multiple printers generate accurate and consistent results in any volume.

**PhotoPRINT DX™** – An unparalleled layout package with design capabilities for text, shapes and effects, combined with the versatility to RIP and print to two devices simultaneously. The design and output of Print & Cut decals is straightforward and accurate with this integrated solution.

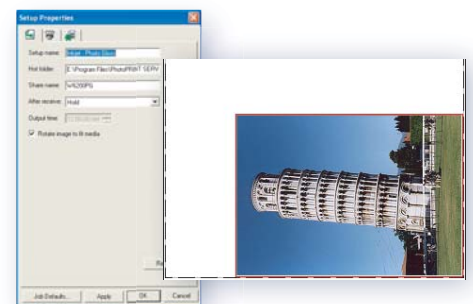
**PhotoPRINT SE™** – A RIP solution with the fundamentals for the single-workstation environment. Send jobs to RIP and print directly from popular design applications such as Adobe Photoshop® and Illustrator®, QuarkXPress®, CorelDRAW®, and CAD/AEC/GIS engineering solutions.



The most versatile **Tiling and Paneling** tool for oversized projects.



Use **Custom Color Mapping** to map spot colors to exact output values.



**Rotate To Fit Media** feature evaluates every job as it comes in, and rotates the image to avoid tiling and to conserve media.

“

"I have been in the large format printing business since 1995. In the beginning I tried many software RIP's and found Scanvec Amiable's PhotoPRINT RIP to be by far the best RIP for the money. Time is money and PhotoPRINT not only saves me time...right on the mark for great color prints...send it to the printer knowing all will print perfectly."

- Marion Babich, GingerBread Photo

"PhotoPRINT SERVER has the most elegant and seamless interface ever. I don't see how it can be improved upon. Beats the competition hands down."

- Mark C. Staples, Staples Fine Art

"Our productivity with PhotoPRINT has far out-paced our initial forecast we planned...The initial learning curve was a snap. We are very pleased with our decision to use PhotoPRINT."

- Bruce George

”

	PhotoPRINT SERVER-ULTRA	PhotoPRINT SERVER-PRO	PhotoPRINT SERVER	PhotoPRINT DX	PhotoPRINT SE
<b>Client</b>					
Print Jobs from any Application	✓	✓	✓		✓
Receive Jobs from a Network Environment	✓	✓	✓		
<b>Job Control</b>					
Interactive Tiling / Paneling	✓	✓	✓	✓	
Tile Map Printing	✓	✓	✓		
Print Color Bars	✓	✓	✓	✓	New
Job Nesting: Manual & Automatic	✓	✓	✓		
Manual Editing of Nested Jobs	✓	✓	✓		
Presets: Import, Save, Apply & Export	✓	✓	✓	✓	Improved
<b>RIP</b>					
Adobe® PostScript® 3	Improved	Improved	Improved	Improved	Improved
Contour Cut to Hybrid Printer/Cutter	✓	✓	✓	✓	✓
Contour Cut to Virtual Hybrid Printer/Cutter	✓	✓	✓	✓	
Simultaneous Output Threads	3	3	3	2	1
Custom Media Creation	✓	✓	✓	✓	✓
CMYK & Spot Color Separations	✓	✓	✓	✓	
<b>Color EXTREME Color Management</b>					
Certified Output Profiles powered by GretagMacbeth	Improved	Improved	Improved	Improved	Improved
ICC Profile Editing	✓	✓	✓	✓	✓
ICC Profile Creation	✓	✓			
ICC Profile Creation powered by GretagMacbeth	New		Optional	Optional	Optional
Utilize 3rd Party ICC Output Profiles	Improved	Improved	Improved	Improved	Improved
Object Color Control	New	New	New		
Global Color Mapping with Pantone® Library	✓	✓	✓	Improved	New
Custom Color Mapping	✓	✓	✓		
Printer Simulation	✓	✓	✓		
Vividness Control	New	New	New	New	New
Pure Hue Preservation	✓	✓	✓	✓	New
<b>Design</b>					
Text Creation & Editing	✓	✓		✓	
Make Transparent Bitmap	✓	✓		✓	
Contour Cut Creation & Editing	✓	✓		✓	
Auto Serialization (Variable Data)	✓	✓		Optional	
Templates: Apply, Create, & Edit	✓	✓		Optional	

### POWERED BY:

gretagmacbeth



For more Information and  
request a Demonstration, please contact:

 汎彩有限公司

VanColor Tech CO., LTD.

320 桃園縣中壢市三樂二街20號

Tel: (03) 493-6095 Fax: (03) 493-6609

E-mail: vancolor@seed.net.tw

PhotoPRINT is a registered trademark of Scanvec Amiable, Inc.;

Adobe and PostScript are registered trademarks of Adobe Systems, Inc.; Pantone and other Pantone, Inc. trademarks are the property of Pantone, Inc.;

GretagMacbeth is the registered trademark of Gretag-Macbeth Ltd. All other trademarks are the property of their respective owners.

©2005 Scanvec Amiable, Inc. All Rights Reserved.

<http://www.vancolor.com.tw>

