



*The Professional Digital Printing  
and RIP Software Solution*



*From Design to Production...Software at Work.*

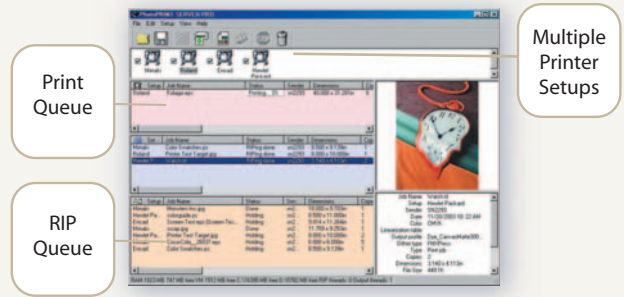
# A New Standard in High Quality Digital Printing Software

Serving the large format printing industry, PhotoPRINT™ Family 4 introduces numerous technological breakthroughs, already raising the bar on performance, quality, and affordability. By combining innovative technology with unmatched ease-of-use, we guarantee you will quickly master the power of PhotoPRINT 4 and maximize your business' productivity.



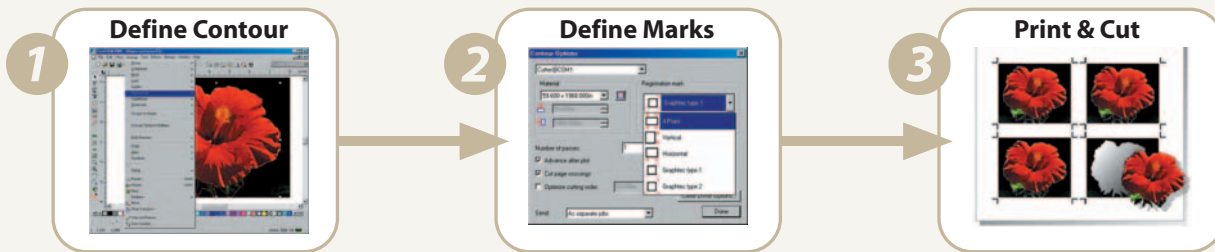
## Intuitive & Powerful

PhotoPRINT Family 4 features an advanced task-based user interface, carefully designed to reduce learning time and simplify workflows. However, do not be misled by PhotoPRINT's ease-of-use. The package is extremely robust, and built to handle the most demanding high print production environments with remarkable speed, ensuring professional output, every single time.



## Print & Cut Made Quick and Accurate

Print your image and contour cut the decal on any printer/cutter combination, or hybrid device. The new 4-point alignment system will account for possible media skew or distortion, and produce accurate cuts of any length. PhotoPRINT 4 also supports the automatic sensing capability of the latest cutter models, for ideal, precise output.

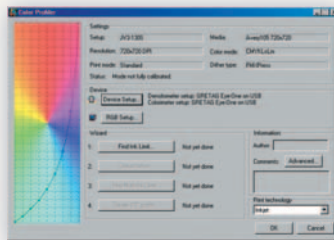


## Unmatched Partner Relationships

With the most thriving partner program on the market, PhotoPRINT Family 4 offers built-in support for hundreds of widely used digital printers, large format printers and vinyl cutters. All drivers and ICC profiles are available and already included with PhotoPRINT 4 at no extra cost!

## Color Management & Profiling

Complex color profiling is now within reach. An innovative Color Profiling Engine and industry-first features such as Underbase Control and Spot Color Separation, give you the highest quality output from the most straightforward color management system in the industry.



*Process, Expanded Process, Light Black, HexaChrome™, and PentaChrome™ - all supported for printing and color profiling.*

## Color Separation Controls

Screen-printing has long been an avenue for many PhotoPRINT Family 4 users with its dependable capabilities for color separation and Angled Screen selections. Now PhotoPRINT 4 offers even more control with saving and loading of Angled Screen settings, as well as the new ScreenPrint™ Companion for Screen Ink Estimation, Underbase Control and Tonal Control.



## Adobe® RIP Engine

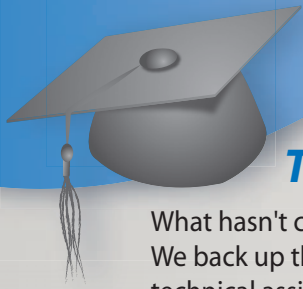
PhotoPRINT Family 4 is the only solution offering a seamlessly integrated Adobe RIP Engine, guaranteeing Accuracy, Reliability and Compatibility.

## Efficiency through Automation

Manage workflows and cut pre-production time with control features such as Job Scheduling, Tile Mapping and Screen Ink Estimation.

## Multi-Queue Server Interface

View jobs-in-progress information and all available devices on a single convenient screen.



## Training & Education

What hasn't changed is Scanvec Amiable's commitment to your business' success. We back up this commitment with an unparalleled level of worldwide customer support, technical assistance and fully localized software and documentation. Our training curriculum is carefully designed to take you on the fastest path to productivity and profitability, thoroughly covering basic through advanced features and functionality.

**PhotoPRINT™ Family 4 offers a full line of Software Solutions, tailored to your Professional Digital Printing needs – Today & Tomorrow:**

**PhotoPRINT SERVER-PRO™** – The complete client-server RIP solution package includes extended capabilities and cost-saving features. Additional features include an extra EDITOR station for layout and design and ICC profile editing and creation, using the Color Calibration Wizard.

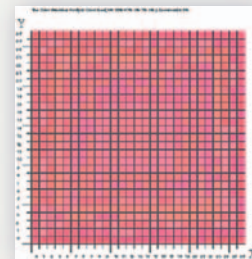
**PhotoPRINT SERVER™** – The client-server RIP solution for networks and large production environments, featuring productivity tools such as Job Priority, Page Nesting and Job Nesting. These tools will make workflow to multiple printers (from both MAC and PC) generate accurate and consistent results in any volume.

**PhotoPRINT DX™** – An unparalleled layout package with design capabilities for text, shapes and effects, combined with the versatility to RIP and print to two devices simultaneously. The design and output of Print & Cut decals is straightforward and accurate with this integrated solution.

**PhotoPRINT SE™** – An entry-level RIP solution for the single-workstation environment. Send jobs to RIP and print directly from popular design applications such as Adobe Photoshop® and Illustrator®, QuarkXPress®, CorelDRAW®, and all major CAD/AEC/GIS engineering solutions.



The most versatile *Tiling and Paneling* tool for super large format projects.



Use *Custom Color Mapping* to map spot colors to exact output values for a specific device.

